



Adobe Illustrator CS6 - CC2015 - Collect for Output (Package)

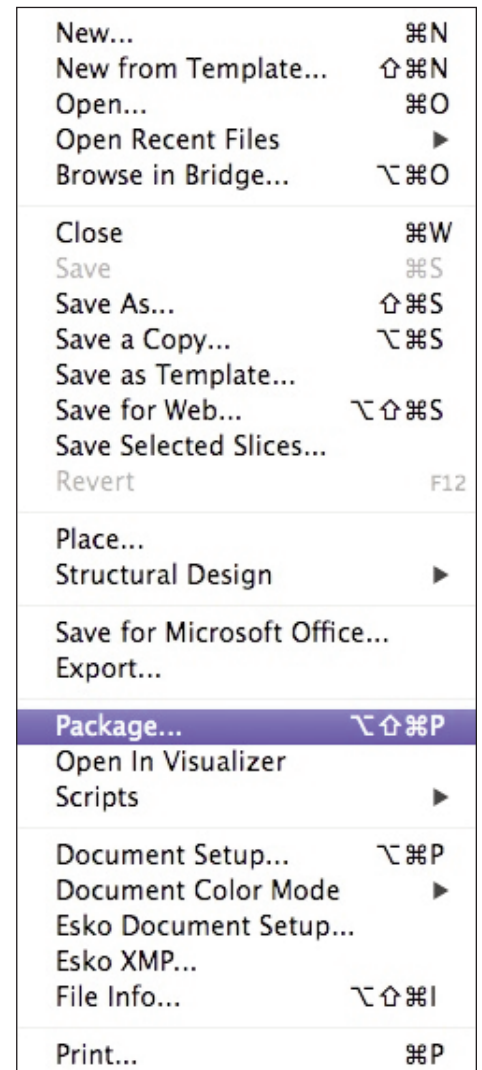
Oftentimes, one of the hardest and most time-consuming tasks of designing a file for print is collecting all the necessary parts (fonts, graphics, etc.) of the design to the printer. **Fortunately, Adobe has added a Collect for Output feature to Illustrator CS6 and newer.**

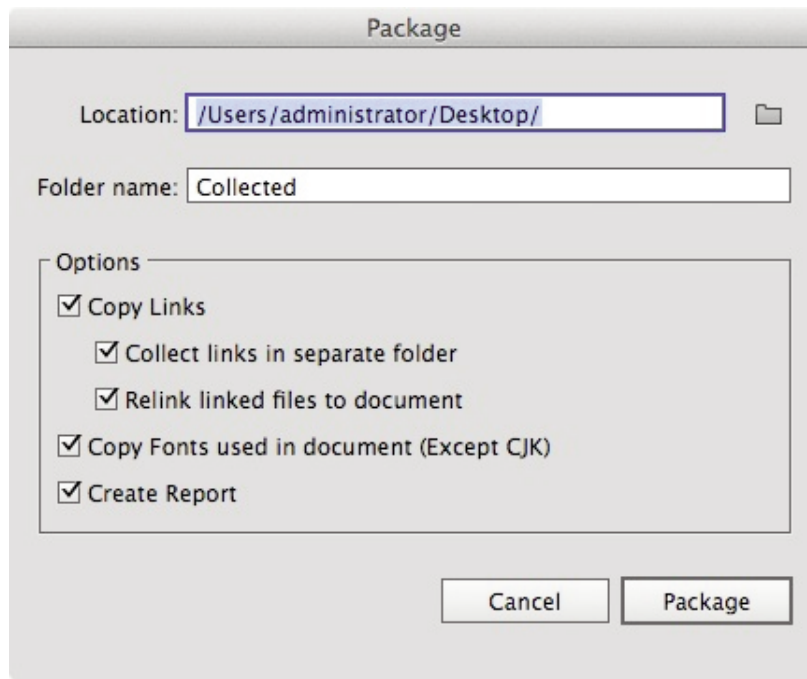
When sending a job for printing, please include:

- Final layout file
- Linked images and graphics
- Fonts used in all project files
- Any used third-party application plug-in's
- Printed disk directory (if sending a disk)
- A hard-copy (or PDF) go-by so that we know how your project should look

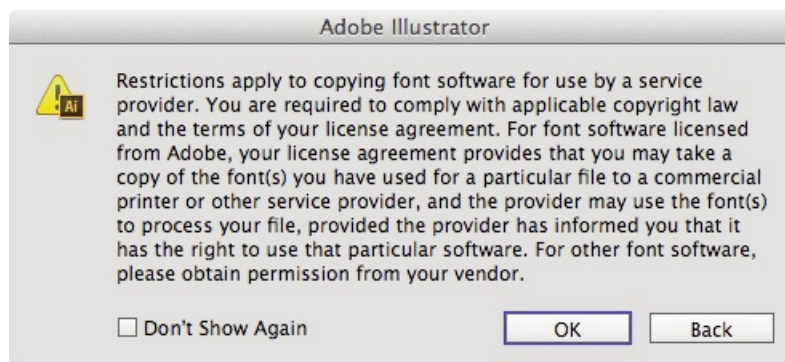
These instructions will show how to use Illustrator's **Package** feature to collect the necessary components so that we may produce your project.

1. Open an Illustrator CS6 or newer file and select **Package...** from the **File** menu:
2. The following window appears:

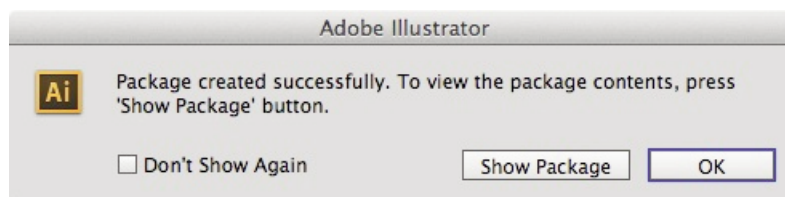




2. Choose a location to save the file package, match the checkboxes above, and click **Package...**
3. The following window appears. Click **OK**:



4. After all files are packaged, the following window appears. Click **OK**:



HopkinsPrinting

For questions, feel free to contact:

Jon Morgan

614-509-1080

jmorgan@hopkinsprinting.com